



## Clarence Mews, London, SE16 5GB

A stylish and recently renovated two bedroom, two bathroom share of freehold apartment in the heart of the sought-after Rotherhithe village, moments from both Overground and Canada Water Underground stations. The apartment features a spacious and bright reception room, contemporary kitchen with plenty of storage, a marble tiled family bathroom, and two spacious bedrooms, one with storage and ensuite. Additional storage can be found in the hallway, plus gated parking space included into the apartment. Conveniently located next to the River Thames and a plethora of local amenities, the apartment is part of a gated development and has an allocated parking space as well as plenty of space to park bicycles.

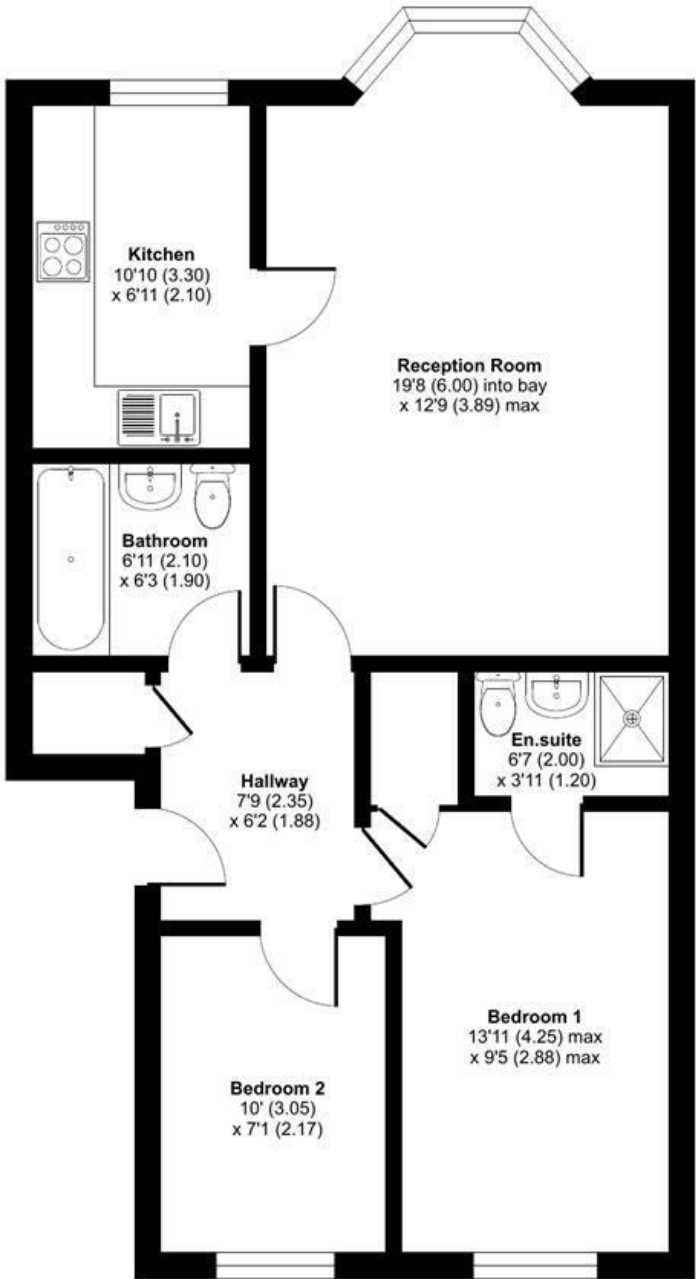
- Share Of Freehold
- Recently Renovated
- Marble Tiled Bathroom plus Additional Ensuite
- Stylish Kitchen
- River Views
- Sought After Rotherhithe Village
- Sash Windows
- Private Allocated Car Parking
- Gated Community steps from River Thames

**Alex & Matteo**  
ESTATE AGENTS

**£2,200 Per month**

Raleigh Court, Clarence Mews, London, SE16

Approximate Area = 678 sq ft / 62.9 sq m  
For identification only - Not to scale



GROUND FLOOR

Alex & Matteo  
ESTATE AGENTS



Floor plan produced in accordance with RICS Property Measurement 2nd Edition, Incorporating International Property Measurement Standards (IPMS2 Residential). © nitchecom 2024. Produced for Alex & Matteo Estate Agents. REF: 1220446

Energy Efficiency Rating		
	Current	Potential
Very energy efficient - lower running costs		
(92 plus) A		
(81-91) B		
(69-80) C	77	78
(55-68) D		
(39-54) E		
(21-38) F		
(1-20) G		
Not energy efficient - higher running costs		
England & Wales		
EU Directive 2002/91/EC		